



NASSAU COUNTY BOARD OF COUNTY COMMISSIONERS
 DEPARTMENT OF PUBLIC SAFETY

911 COORDINATOR
 50 Bobby Moore Circle
 P. O. Box 596
 Yulee, Florida 32097



RESOLUTION NUMBER 96-120

WHEREAS, the Board of County Commissioners of Nassau County Florida did establish Ordinance Number 92-14 providing for a process of naming and renaming streets in Nassau County, and

WHEREAS, the majority of citizens of Nassau County currently residing on an "unnamed easement off Bismark Road"; located in Section 46; Township 2N; Range 25E; requested that the street be named "SHUG ROAD", and

WHEREAS, the residents understand that they must pay for the construction and placement of new street signs reflecting this change, and

WHEREAS, the 911 Coordinator's office has reviewed the request in accord with Ordinance Number 92-14, and has verified the request as acceptable and not in conflict with names already assigned, and

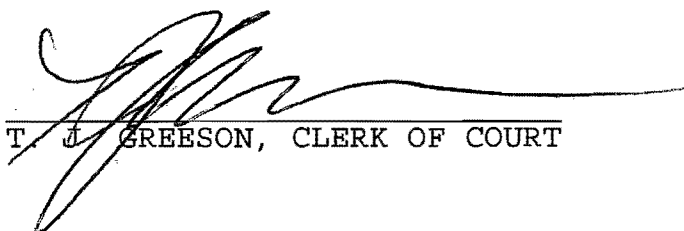
WHEREAS, the 911 Coordinator's office has forwarded the request to the Board of County Commissioners for consideration, now

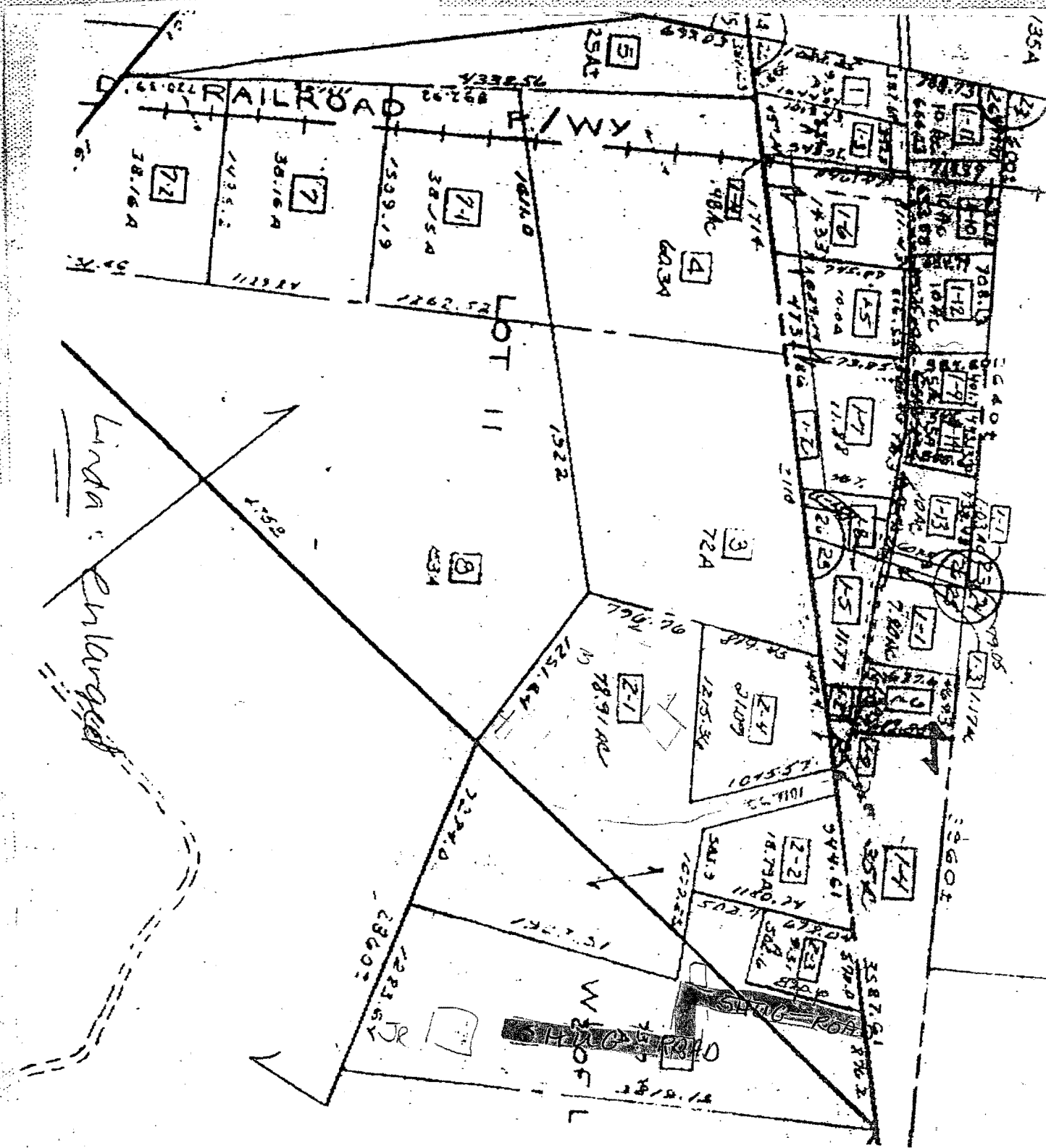
THEREFORE LET IT BE RESOLVED; THIS 10th DAY OF June 1996, that the street currently known as **unnamed easement off Bismark Road**, in Nassau County, Florida be hereafter referred to and known as **SHUG ROAD**, and the County Engineer shall be authorized to erect any and all necessary signs indicting said name.

BOARD OF COUNTY COMMISSIONERS
 OF NASSAU COUNTY FLORIDA


 JIM B. HIGGINBOTHAM, CHAIRMAN

ATTEST:


 T. J. GREESON, CLERK OF COURT



Linda: Enlarged

STREET STOP

W 100 FT ST

LOT 11

RAILROAD

F/WY

38.16 A

72

7

7-1

4

8

3

2-1

2-2

14

135A

13601

23602

2294.0

125.14 AC

78.91 AC

1522

1262.22

38.15 A

1509.19

4435.2

38.16 A

78.16 A

60.34

12.53 AC

0.109

10755.7

54.61

18.77 AC

587.61

500.0

8.14

1.8

1.8

1.8

1.8

1.8

1.8

1.8

1.8

1.8

1.8

1.8

1.8

1.8

1.8

1.8

1.8

1.8

1.8

1.8

1.8

1.8

1.8

1.8

1.8

1.8

1.8

1.8

1.8

1.8

1.8

1.8

1.8

1.8

1.8

1.8

1.8

1.8

1.8

1.8

1.8

1.8

1.8

1.8

1.8

1.8

1.8

1.8

1.8

1.8

1.8

1.8

1.8

1.8

1.8

1.8

1.8

1.8

1.8

1.8

1.8

1.8

1.8

1.8

1.8

1.8

1.8

1.8

1.8

1.8

1.8

1.8

1.8

1.8

1.8

1.8

1.8

1.8

1.8

1.8

1.8

1.8

1.8

1.8

1.8

1.8

1.8

1.8

1.8

1.8

1.8

1.8

1.8

1.8

1.8

1.8

1.8

1.8

1.8

1.8

1.8

1.8

1.8

1.8

1.8

1.8

1.8

1.8

1.8

1.8

1.8

1.8

1.8

1.8

1.8

1.8

1.8

1.8

1.8

1.8

1.8

1.8

1.8

1.8

1.8

1.8

1.8

1.8

1.8

1.8

1.8

1.8

1.8

1.8

1.8

1.8

1.8

1.8

1.8

1.8

1.8

1.8

1.8

1.8

1.8

1.8

1.8

1.8

1.8

1.8

1.8

1.8

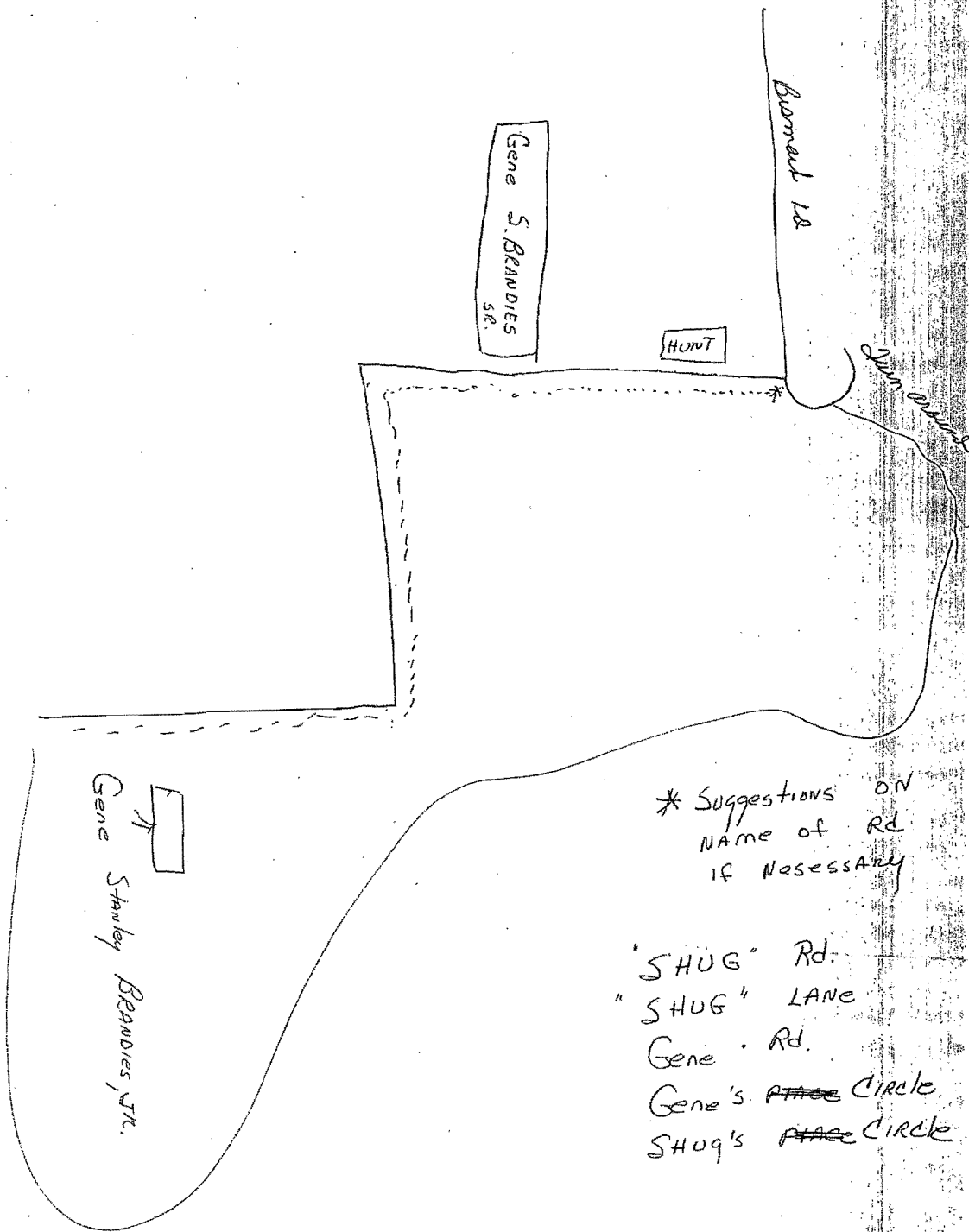
1.8

Gene Stanley Brandies, Sr.

P.O. Box 899

CAITHAM, FL 32011

PARCEL # 46-2N-25-0000-0002-0000



* Suggestions ON
NAME of Rd
IF NECESSARY

- "SHUG" Rd:
- "SHUG" LANE
- Gene Rd.
- Gene's ~~PLAC~~ CIRCLE
- SHUG'S ~~PLAC~~ CIRCLE